




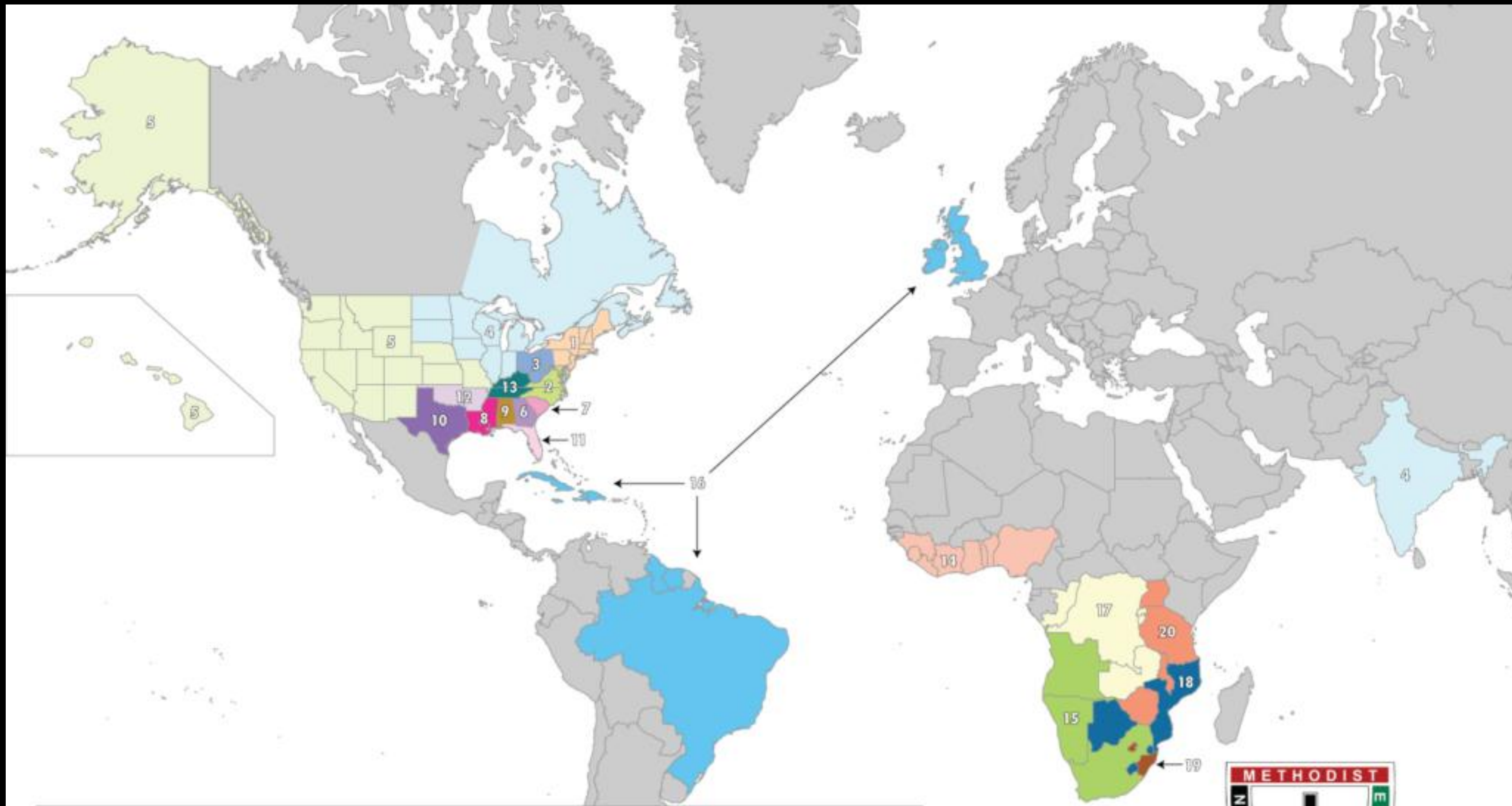
WESTMINSTER SEMINAR SERIES • RICHARD NORRIS, III, PRESENTER

UNDER OUR OWN VINE & FIG TREE

The AME Movement



PART III: POLITY



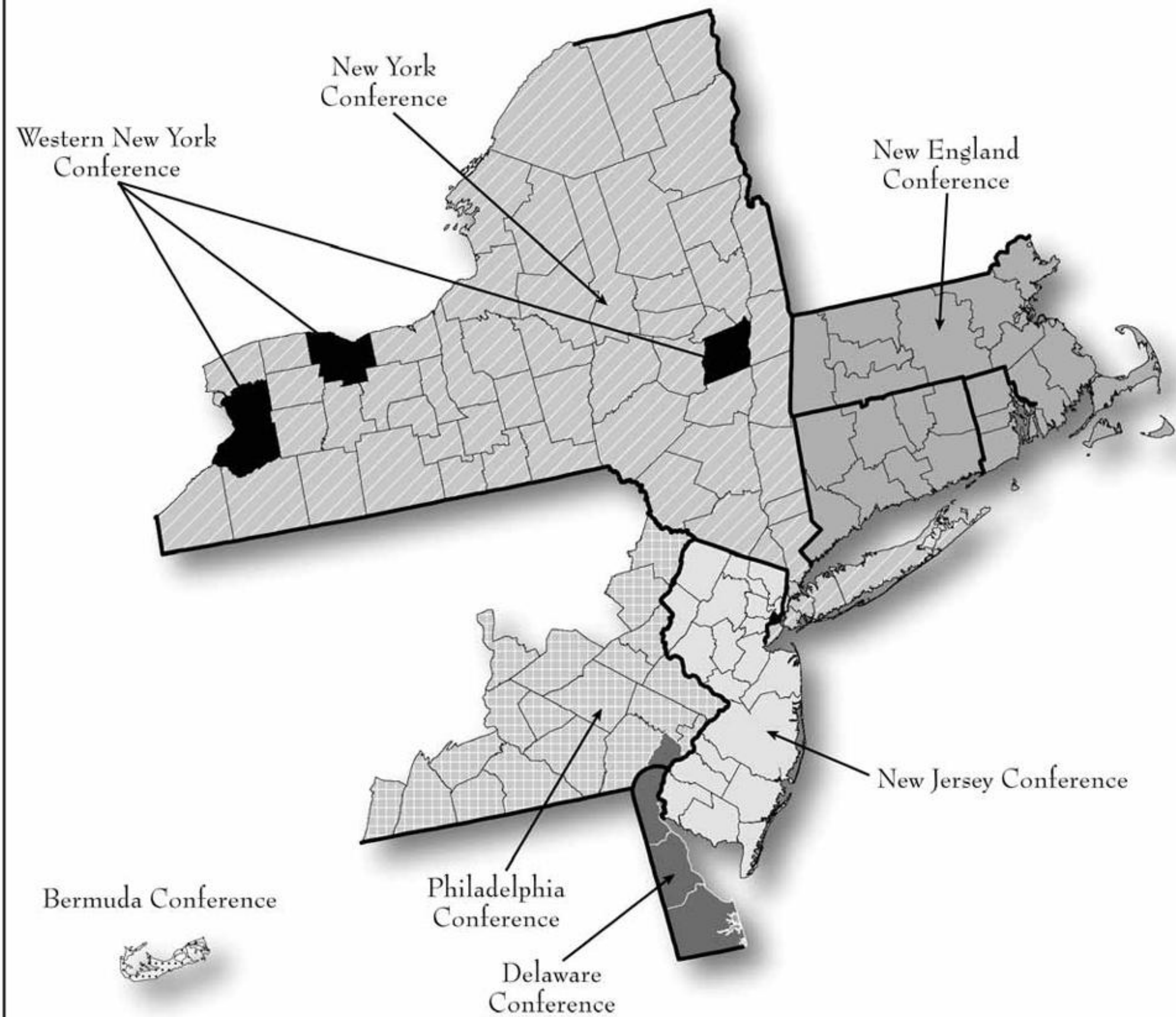
1 Delaware, New Jersey, New York, Western New York, New England, Philadelphia, and Bermuda	6 Georgia	15 Cape, S.W.A. (Namibia), Kalahari, Queenstown, and Angola
2 Baltimore, North Carolina, Washington DC, Western North Carolina, and Virginia	7 South Carolina	16 South America, Carribean, and London
3 Ohio, West Pennsylvania, and West Virginia	8 Louisiana and Mississippi	17 Zimbabwe, Zambia, Zambezi, Congo Brazzaville, Katanga, Kananga, Kinshasa, Mbuji-mayi, Rwanda, and Burundi
4 Nova Scotia, Ontario, Quebec, Illinois, Indiana, Iowa, Michigan, Minnesota, North Dakota, South Dakota, Wisconsin, and India	9 Alabama	18 Lesotho, Eswatini, Botswana, Mozambique, and Northeast Lesotho
5 Alaska, Arizona, California, Colorado, Hawaii, Idaho, Kansas, Missouri, Montana, Oregon, Nebraska, Nevada, New Mexico, Utah, Washington, and Wyoming	10 Texas	19 South African Provinces of Guateng and KwaZulu-Natal
	11 Bahamas and Florida	20 Malawi and Zimbabwe
	12 Arkansas and Oklahoma	
	13 Tennessee and Kentucky	
	14 Guinea, Liberia, Sierra Leone, Nigeria, Cote D' Ivoire, and Togo-Benin	



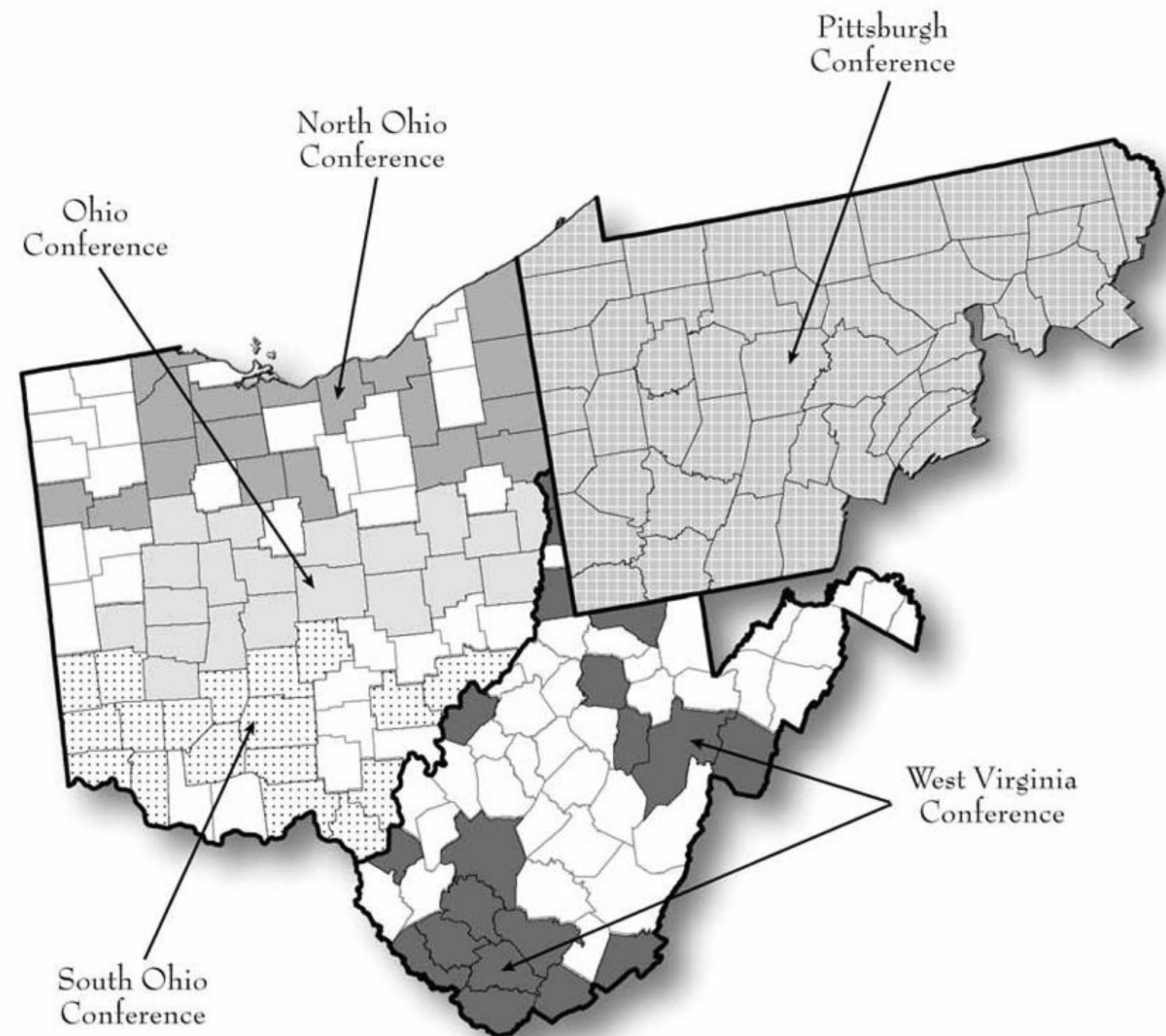
AMEC

AFRICAN METHODIST
EPISCOPAL CHURCH
DISTRICT MAP

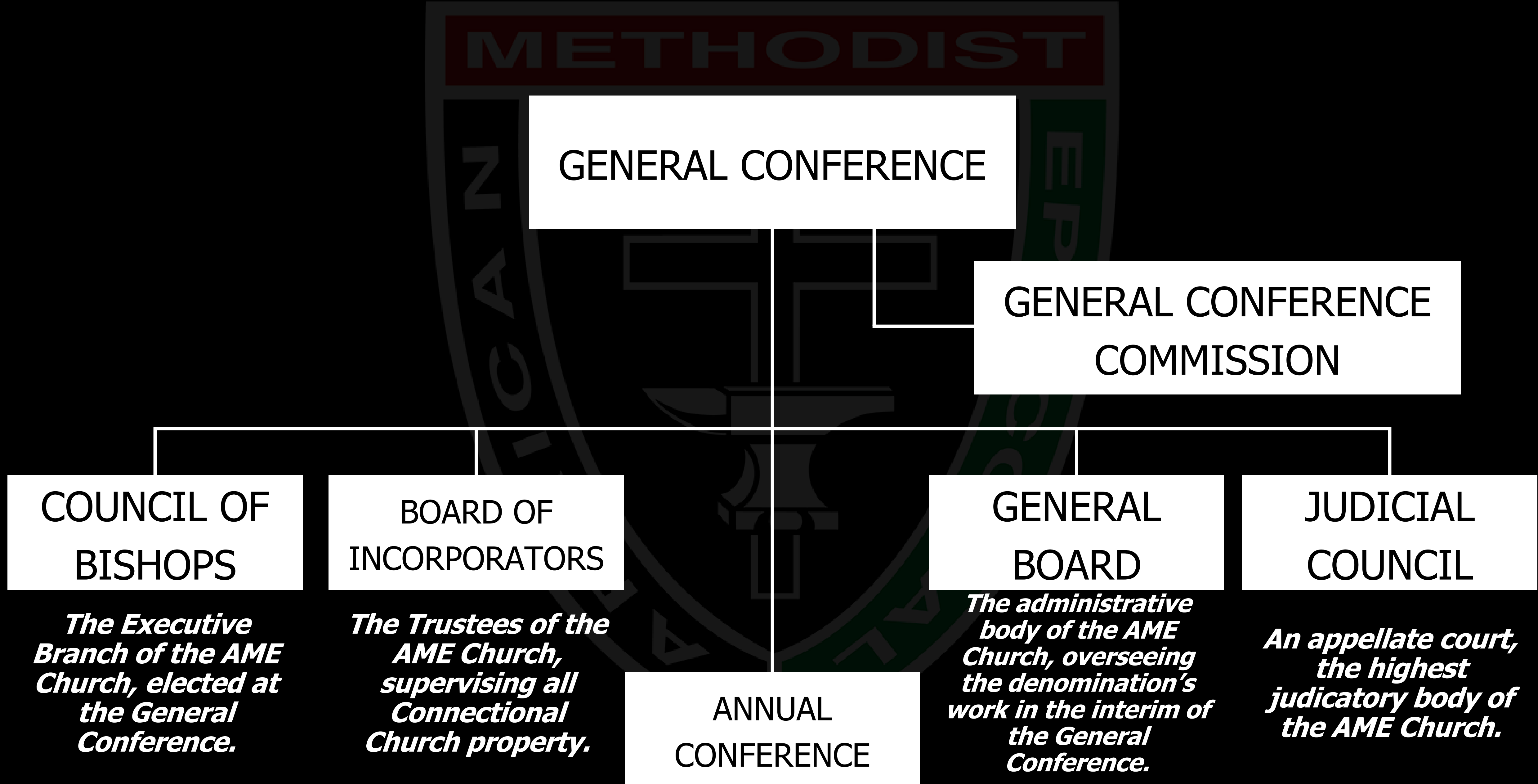
FIRST DISTRICT



THIRD DISTRICT



ORGANIZATIONAL CHART



THE ANNUAL CONFERENCE

- “A geographical grouping of congregations in a specified geographical area to form the legal entity of Methodist polity. This is where mission, resource personnel (clergy and lay) and property are administered, and where a bishop serves as president.”
- Meets yearly, at the call of the bishop.
 - Comprised of all clergy, component leaders, and one delegate from each congregation.
 - Some Episcopal Districts hold their Annual Conferences in the spring, while others hold theirs in the fall.

THE GENERAL CONFERENCE

- The supreme body of the AME Church, bringing together delegates from all 20 Episcopal Districts to elect new leaders and pass new laws to be included in *The Discipline*, our governing document.
- Each Annual Conference elects a certain number of delegates (clergy and lay) proportional to the Conference’s size.
- Meets quadrennially, rotating locations.
 - 2024: Columbus, OH
 - 2028: Kansas City, MO
 - 2032: Nashville, TN

SELECTED SCENES FROM
THE ANVIL: ECHOES FROM THE GENERAL CONFERENCE

METHODIST

The Anvil:
Echoes From The General Conference



QUESTIONS?



**NEXT TIME:
PART IV: WORSHIP**